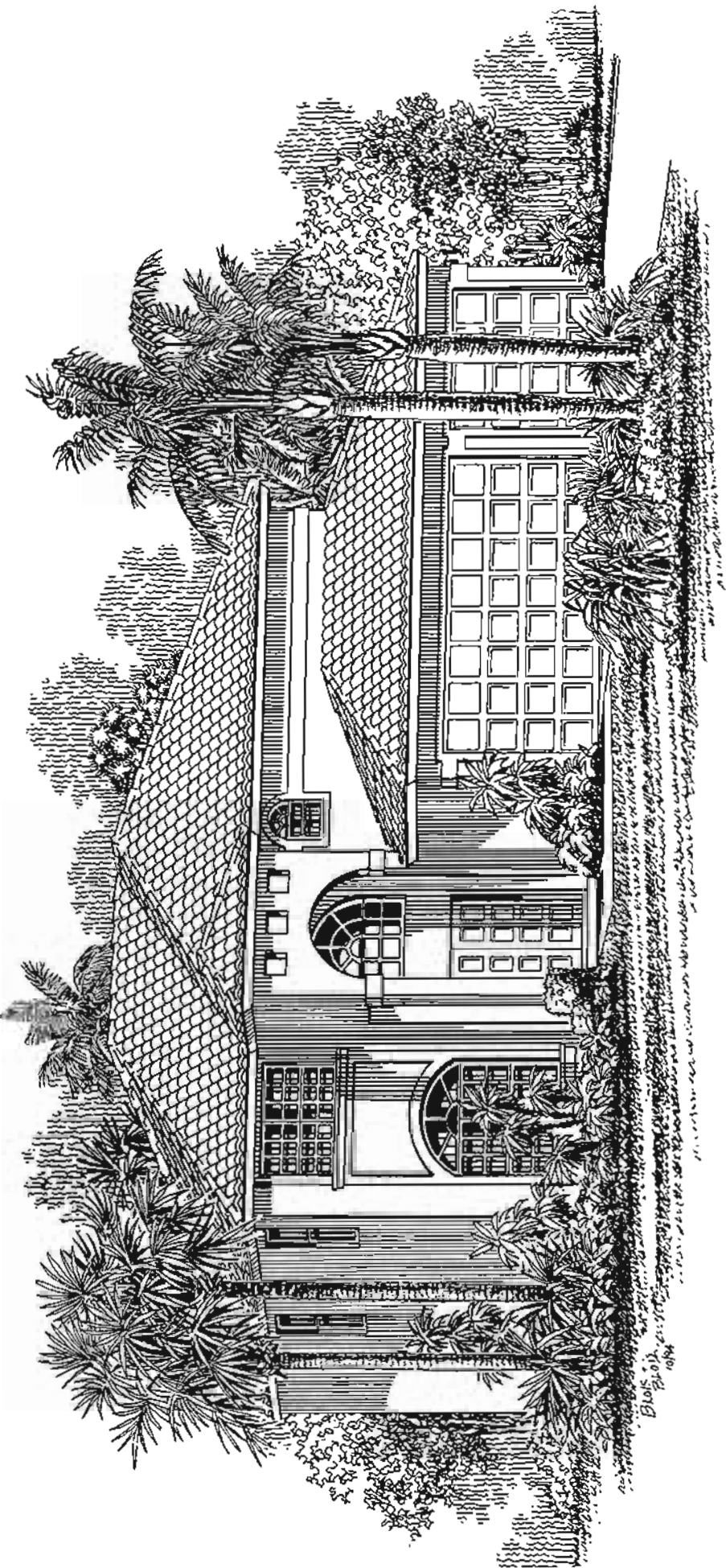


# PRELIMINARY

ELEVATION #1



Family Room, 3 Car Garage

4 bedrooms, 2 1/2 baths

## Great Spruce '95

# Pembroke Falls

THE BEST OF BROWARD™

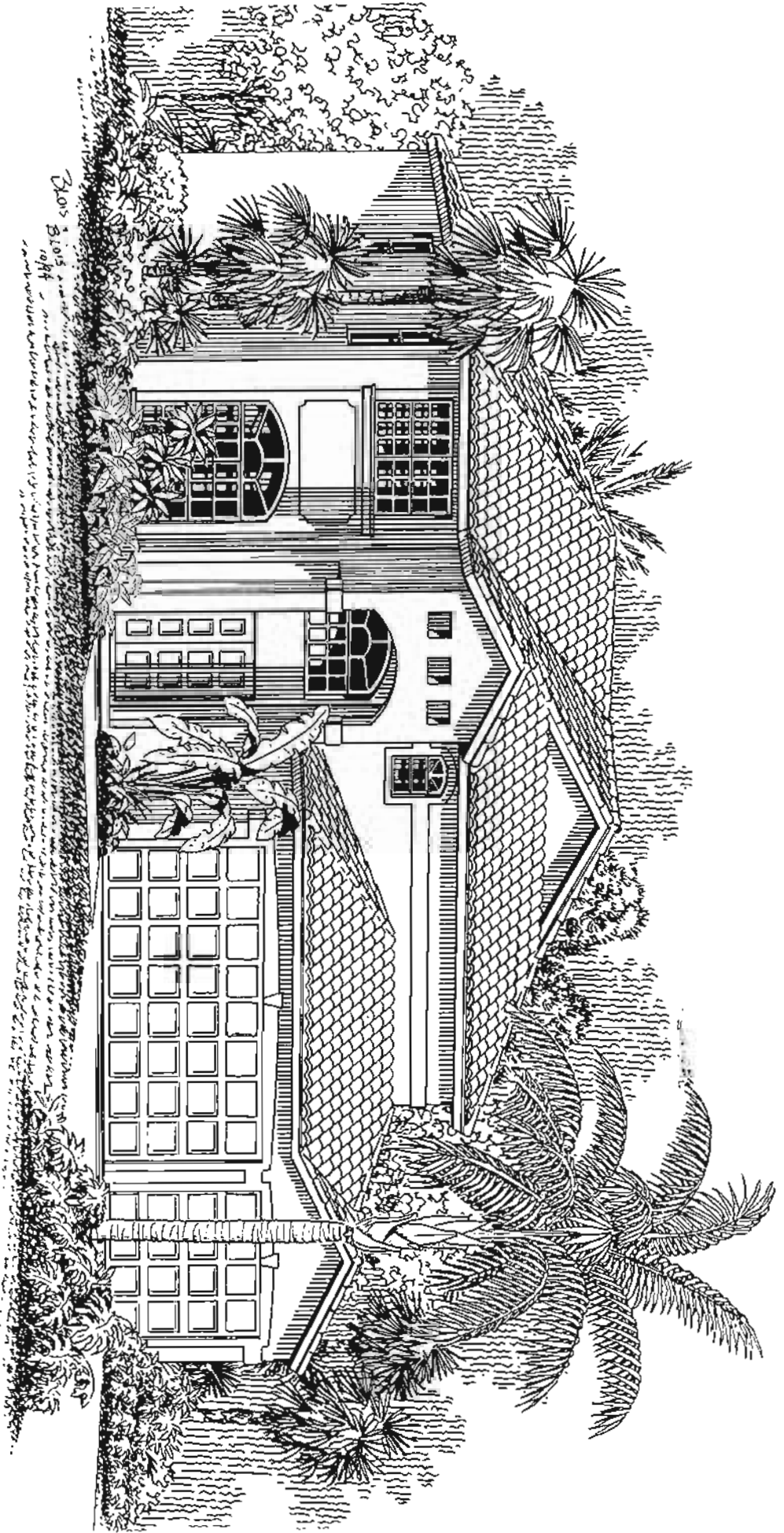
Family Room, 3 Car Garage

4 bedrooms, 2 1/2 baths

## Great Spruce '95

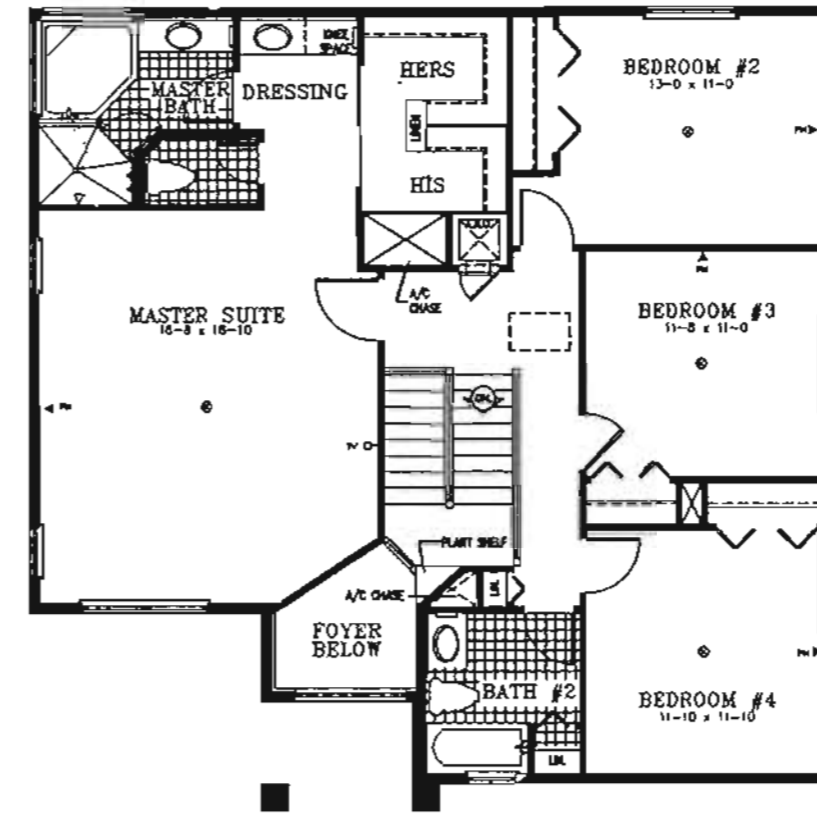
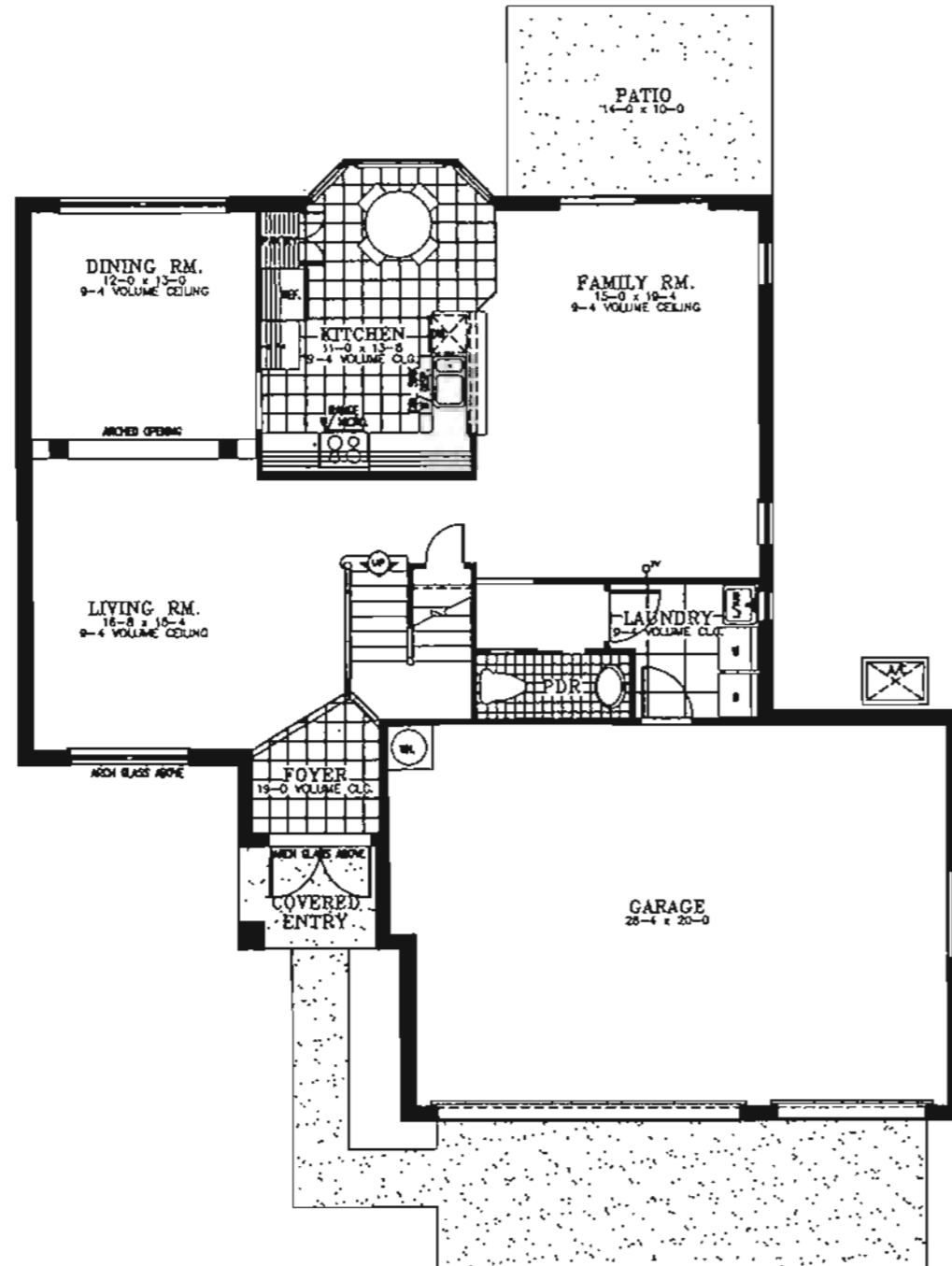
THE BEST OF BROWARD™

# Pembroke Falls



ELEVATION #2

# PRELIMINARY



SECOND FLOOR PLAN

- ⊙ ROUND FAN OUTLET
- ◀ 4 PR PHONE OUTLET
- ◀ TV TV OUTLET

FIRST FLOOR LIVING:	1194 S.F.
SECOND FLOOR LIVING:	1270 S.F.
TOTAL LIVING:	2464 S.F.
GARAGE:	629 S.F.
COVERED ENTRY:	28 S.F.
TOTAL:	3191 S.F.

9/19/96

Preliminary Floor Plan. All dimensions are approximate. The seller reserves the right to change and/or alter materials, specifications, features, dimensions, designs, landscaping and prices without notice. Landscaping is provided in the front yard only.

ORAL REPRESENTATIONS CANNOT BE RELIED UPON AS CORRECTLY STATING THE REPRESENTATIONS OF THE SELLER. REFER TO THE CONTRACT AND THE OTHER HOMEOWNER DOCUMENTS FOR CORRECT REPRESENTATIONS

All dimensions are approximate and subject to construction variations.

Window designs may vary between elevations.



Compliments of  
**Willard**  
REALTY TEAM

**954-745-4735**  
Keller Williams Realty

**ENGLE**  
HOMES  
PEMBROKE