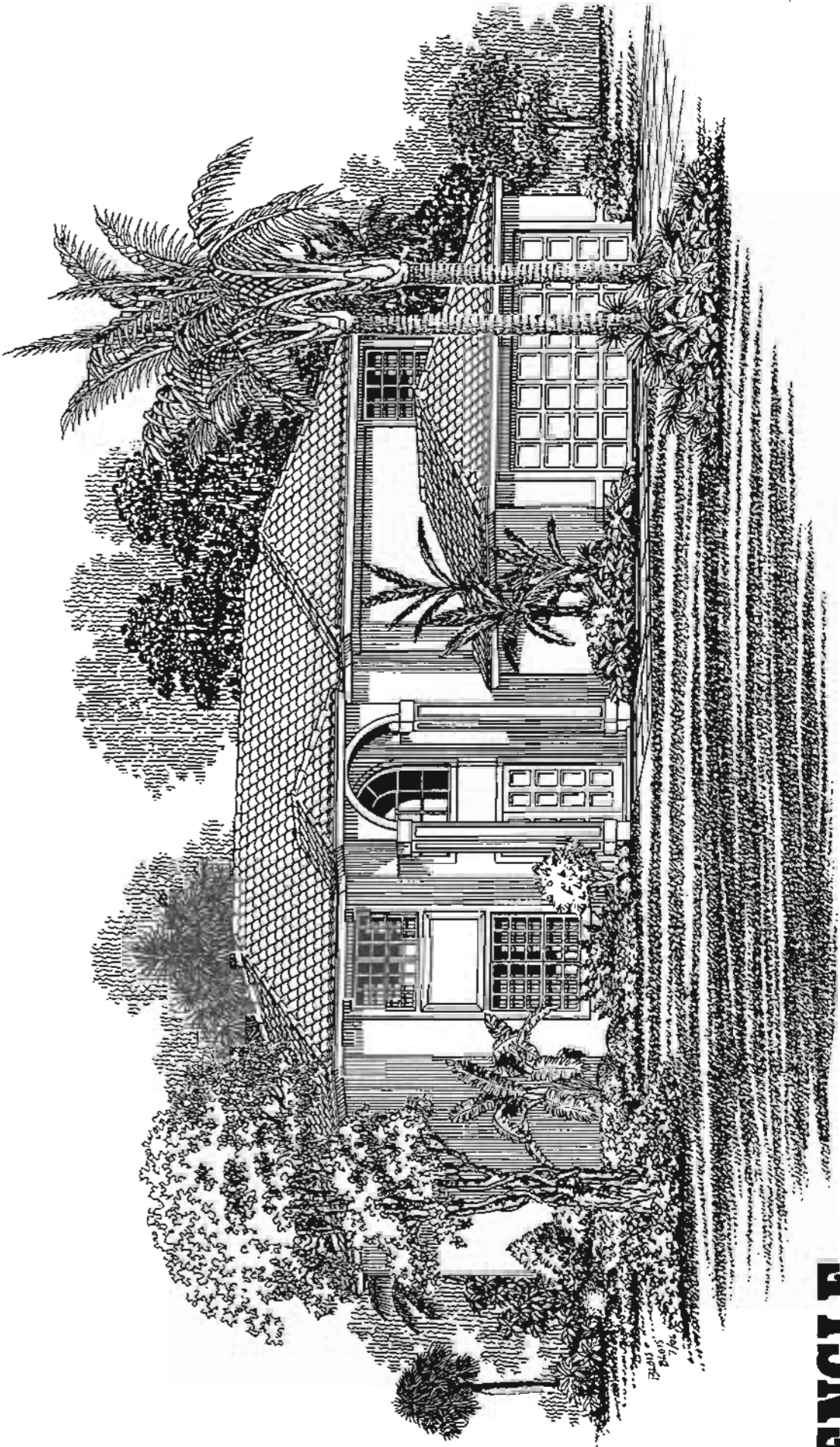


PRELIMINARY

ELEVATION #1



Family Room, 2 Car Garage

5 bedrooms, 3 baths

Chesapeake V

Pembroke Falls

THE BEST OF BROWARD

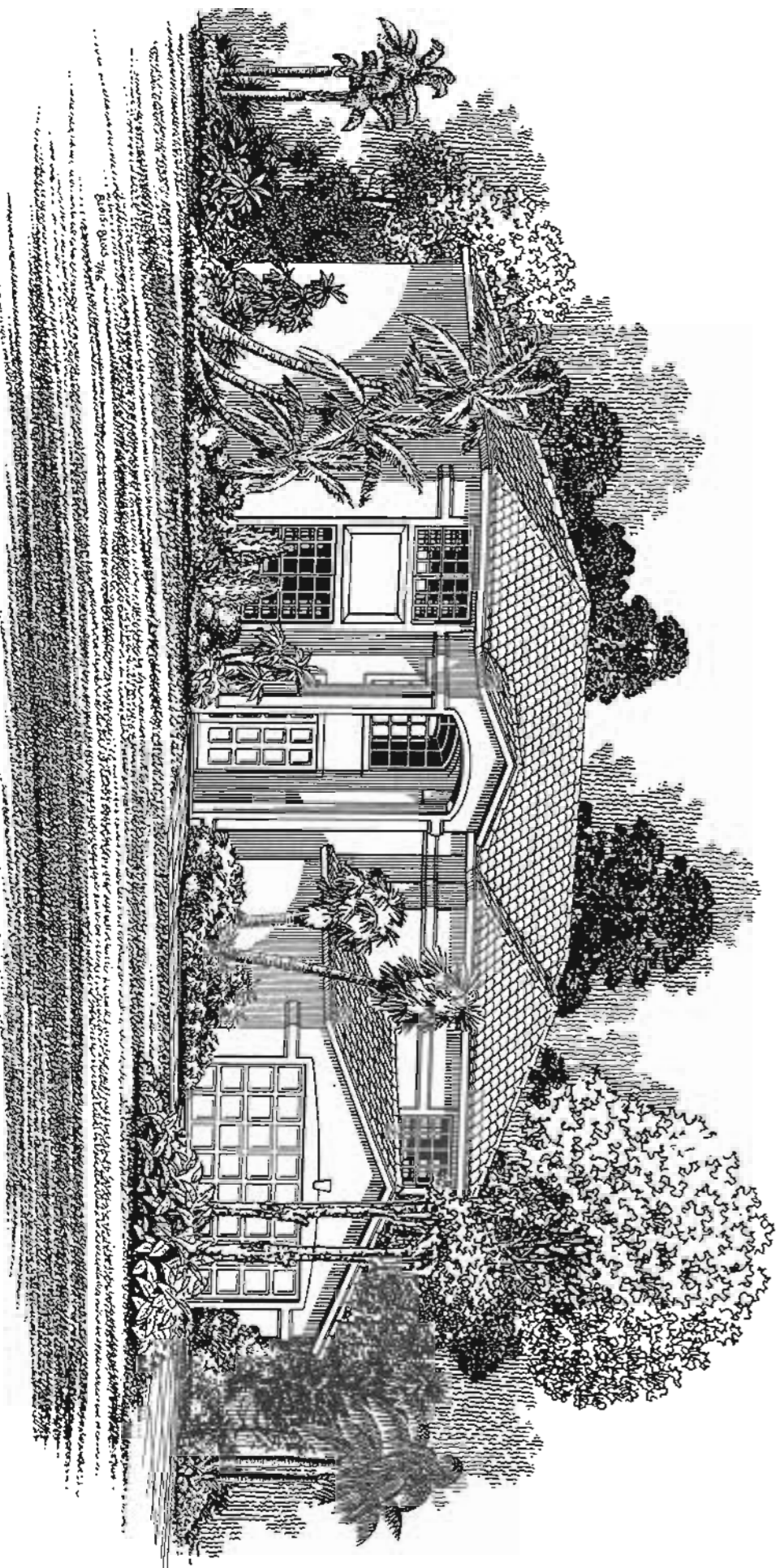
Family Room, 2 Car Garage

5 bedrooms, 3 baths

Chesapeake V

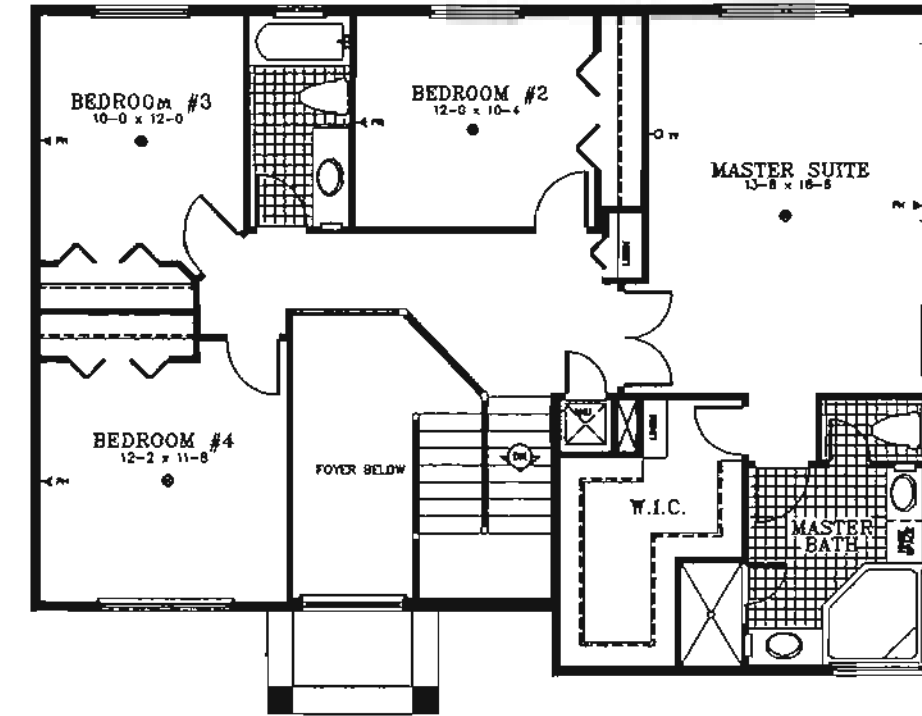
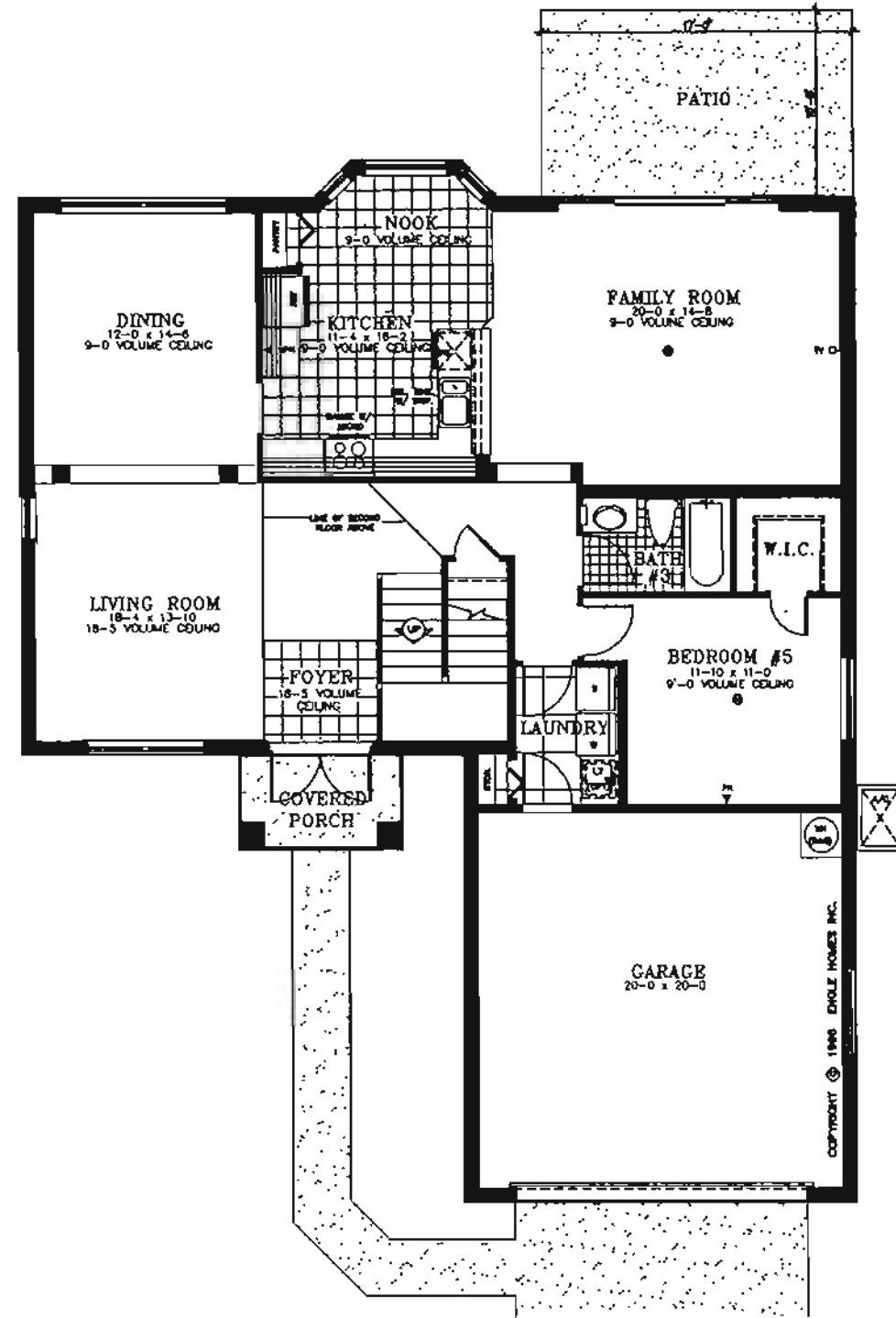
Pembroke Falls

THE BEST OF BROWARD



ELEVATION #2

PRELIMINARY



1st FLOOR LIVING:	1418 SF
2nd FLOOR LIVING:	1229 SF
TOTAL LIVING:	2647 SF
GARAGE:	430 SF
COVERED ENTRY:	43 SF
TOTAL:	3129 SF

9/8/96

- ⊙ CEILING FAN OUTLET
- ◀ PH PHONE OUTLET
- ◀ TV TV OUTLET

Compliments of



954-745-4735

Keller Williams Realty

Preliminary Floor Plan. All dimensions are approximate. The seller reserves the right to change and / or alter materials, specifications, features, dimensions, designs, landscaping and prices without notice. Landscaping is provided in the front yard only.

ORAL REPRESENTATIONS CANNOT BE RELIED UPON AS CORRECTLY STATING THE REPRESENTATIONS OF THE SELLER. REFER TO THE CONTRACT AND THE OTHER HOMEOWNER DOCUMENTS FOR CORRECT REPRESENTATIONS.

All dimensions are approximate and subject to construction variations.

Window designs may vary between elevations.

