

FEATURES OF YOUR KEYSTONE LAKE HOME.

The homes of The Executive Series at Keystone Lake are designed and built to the highest standards, and come complete with all of the features listed here. However the single most important feature is that your home is built and backed by Westbrooke Communities, Inc., a name synonymous with outstanding value in South Florida.

Throughout your home

- Sturdy lifetime concrete block construction on all floors and gable ends
- Central air conditioning and heating systems
- Walk-in closet with air conditioning vent (in master bedroom)
- Mirrored closet doors in all master baths
- Luxurious wall to wall carpeting in your choice of decorator colors, installed over waffled padding
- Sprayed acoustical ceilings to reduce noise
- Marble window sills
- Sculptured wood baseboards and door casings
- Tempered safety glass sliding doors
- Wood closet doors
- Architecturally accented and insulated metal front entry door with dead bolt and quarry tile riser
- Door chime and viewer
- Flow-through ventilation
- Pre-wired television cable outlets (two)
- Pre-wired telephone outlets (three)
- Ventilated vinyl-clad closet shelving
- White aluminum framed windows and sliding glass doors
- Screens on all windows and sliding glass doors
- Decorator lighting fixtures in kitchen, foyer, hallways, baths and garage
- Pre-wired for ceiling fans in family room and all bedrooms
- Rounded corner beads
- Decora rocker switches

- Smoke detectors
- Flat cement tile roof on all "A" elevations; "S" tile roof on "B" and "C" elevations
- Dramatic plant shelves
- 12" x 12" ceramic tile in foyer in your choice of colors
- Automatic circuit breakers
- Alarm with the purchase of a 3 year monitoring agreement

In your all-electric kitchen

- 20 cu. ft. side-by-side refrigerator with automatic ice maker (in your choice of colors)
- Built-in microwave oven
- Sound insulated automatic dishwasher
- Double compartment sink with food waste disposal
- 30" electric range with self cleaning oven
- Custom crafted European mica cabinets with wire handles (in your choice of colors)
- 12" x 12" ceramic tile floors in your choice of colors

Exquisite baths

- Ceramic tile floors (in your choice of colors)
- Ceramic tile walls with accent (in your choice of colors)
- Cultured marble vanity top (in all baths)
- Full-width mirrors
- Mirrored medicine cabinets
- Cultured marble Roman tubs
- Designer faucets in all sinks, tubs and showers
- Separate shower with door enclosure

Outside your home

- Fully sodded and professionally landscaped homesites
- Concrete driveways and front walkways
- Stucco exteriors with architectural accents (Keystone accents available on alternate elevations)
- All underground utilities
- Central water and sewer service
- Dramatic front porches and entryways
- Exterior lighting fixtures
- Sprinkler system in the front and rear yards
- Outdoor receptacles in front and rear
- Coach light at garage
- Hose bibs (in front and rear)
- Two car garage with raised panel steel garage door
- Hurricane shutters

Energy saving features

- Sprayed-on wall insulation
- Double element water heater
- Insulated air distribution system
- High efficiency air conditioning
- R-19 Batt insulation in ceiling

Your community

- Private gated neighborhood with guard house
- 143 acre lake
- Playgrounds
- Ten year homeowner protection provided by Bonded Builder's Home Warranty Association

The Copenhagen

3 bedrooms, 2 baths with family room, laundry room and 2-car garage (den option available)



Elevation A



Elevation B



Elevation C



2342 N.W. 184 Terrace, Pembroke Pines, Florida 33029

Telephone: (954) 433-1152

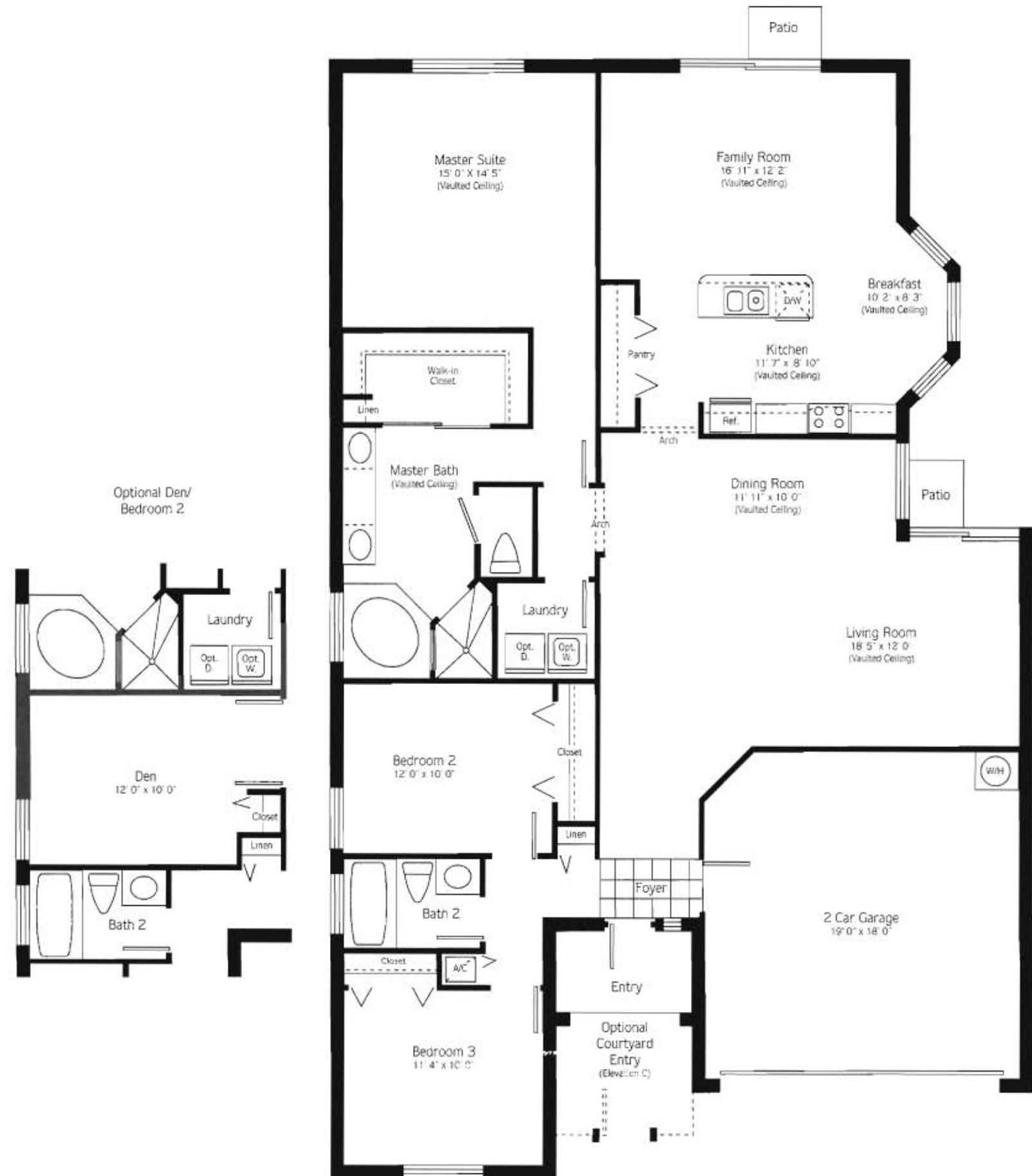


The Executive Series

Due to continual product improvement, builder may substitute specific products from time to time.

The Copenhagen

3 bedrooms, 2 baths with family room,
laundry room and 2-car garage (den option available)



Compliments of



954-745-4735

Keller Williams Realty