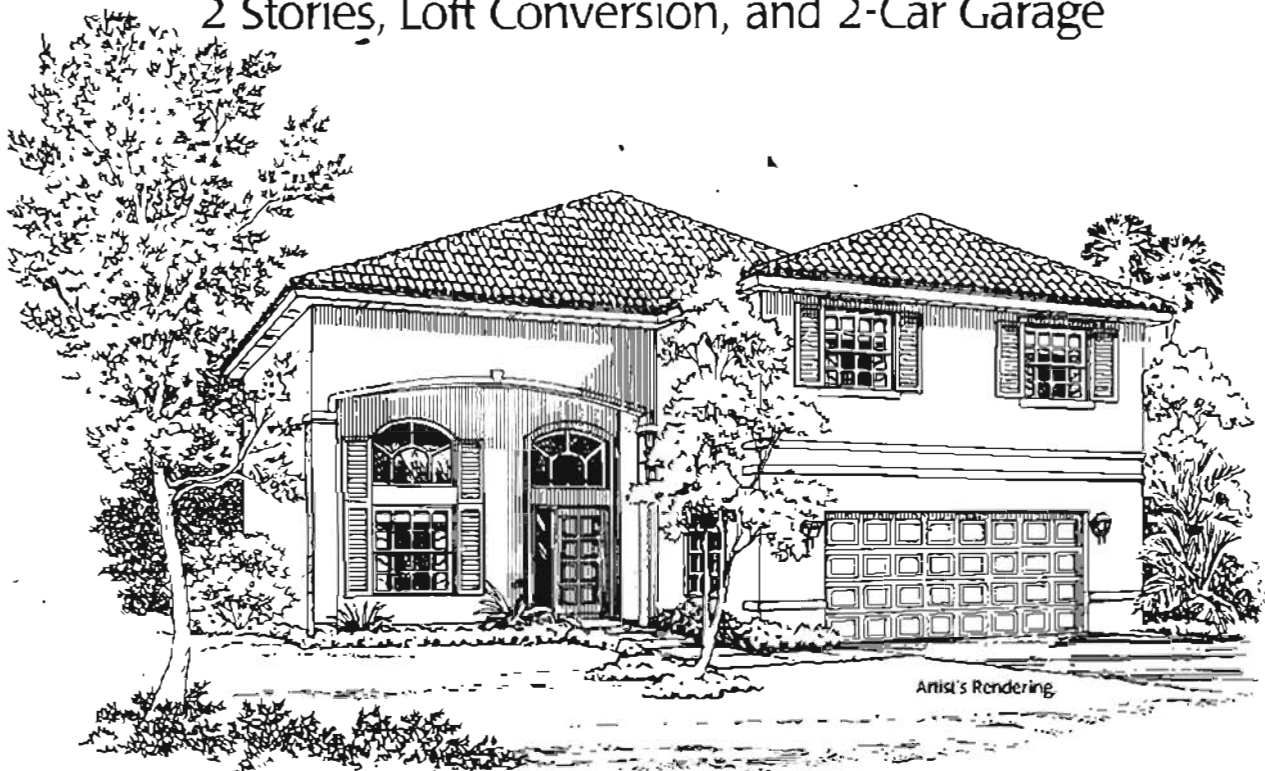


The Grosvenor

4 Bedrooms, 2 1/2 Baths, Family Room,
2 Stories, Loft Conversion, and 2-Car Garage



Unique in its architectural design, The Grosvenor is an expressive home with grand spaces and light-filled rooms. The wide covered entry opens onto a splendid foyer that takes in the central rooms of the home. A spectacular dining room with a volume ceiling opens off in one direction while the living room with its two-story ceiling lies in the other. Above is a balcony that connects the two wings of the second floor. The Grosvenor is a dramatic home of great warmth and beauty.

Beyond the living room lie the magnificent kitchen with bay-windowed breakfast room and an enormous family room. Designed to meet the needs of a gourmet cook, the eat-in kitchen features superb appliances and plenty of counter

space with undercounter lighting. The family room offers the option of a covered terrace for enjoying the cool shade on a warm afternoon.

Four bedrooms, including the master suite, are at the top of the stairs. Separated by an elegant balcony that leads into a loft, two bedrooms have enormous privacy. At the back of the second floor is a grand master suite. Cultured marble vanities, his and hers closets, a massive Roman tub and separate shower are just a few of the splendid details in the master bath. The option of a private balcony off of the master bedroom defines the state of luxury that The Grosvenor offers.



ESTANCIA

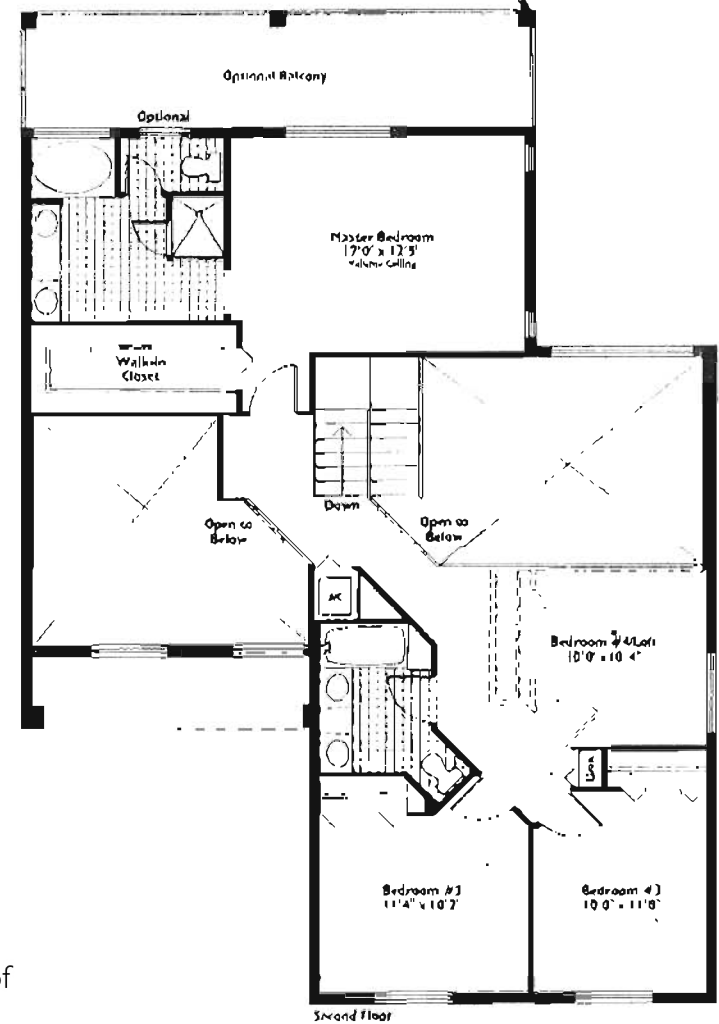
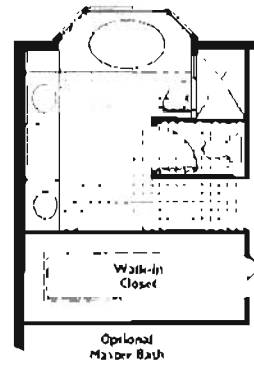
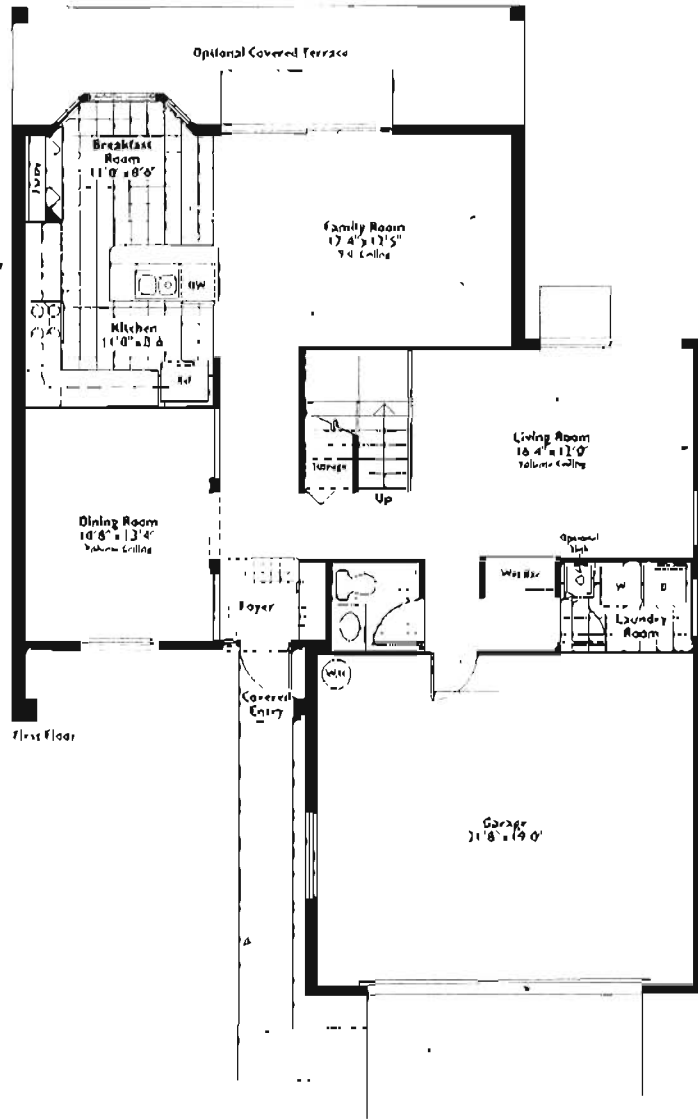
IN PEMBROKE PINES

18900 SW 3RD STREET • PEMBROKE PINES, FL 33029 • 305/433-5399

A Joint Venture of The Adler Companies and Levitt Homes, Incorporated

The Grosvenor

4 Bedrooms, 2 1/2 Baths, Family Room, 2 Stories, Loft Conversion, and 2-Car Garage



Compliments of



954-745-4735

Keller Williams Realty

Air Conditioned Area.....	2,180 Sq. Ft.
Garage.....	452 Sq. Ft.
Covered Entry.....	68 Sq. Ft.
Total.....	2,700 Sq. Ft.

Plans, specifications, dimensions
Floor plans not to scale and may be revised without notice

or nullify
any as to maturity and number