

The Essex

5 Bedrooms, 3 1/2 Baths, Family Room,
2 Stories, Loft Conversion, and 2-Car Garage



Grand in both its design and style, The Essex is a truly magnificent home created for today's active family. An impressive covered entry leads to double doors opening onto a ceramic tile foyer. Welcome guests into the spectacular living room with its majestic two-story ceiling and grand staircase that sweeps up to the second floor. The formal dining room is ideal for large family gatherings or an intimate candle-lit dinner for two. With nine-foot high ceilings in the dining room, kitchen, and family room, The Essex is an airy home that allows you to entertain in the grand tradition.

The open design of the kitchen is ideal for daily family activities. Prepare a gourmet feast with top-of-the-line appliances or simply enjoy a cup of coffee in the spacious breakfast area. Friends will gather around the island work center for chips-and-dip before watching the big game in the oversized family room. Large enough for everyone, the family room boasts a walk-in entertainment bar that services both the living room and family room. Oversized sliding glass doors open onto a rear yard, the perfect place to relax after a hectic day.

The first-floor master bedroom suite is nothing short of magnificent. A wonderful private sitting area with an oversized bay window is the perfect place to enjoy a good book or to set up a home gym. Just past the pair of walk-in closets is a huge master bath highlighted by a massive Roman tub and separate shower. Grand in scale, the bath area design is very efficient. The his-and-hers sinks let each of you get ready for the day at your own pace.

The Essex boasts exceptional second-floor living quarters. At one end of the floor is a second master suite with its own bath, walk-in closet, and an optional balcony. Designed for maximum versatility, this second suite can serve as a separate in-law suite, deluxe quarters for guests, or as a private suite for a son or daughter visiting from college. At the other end of the floor are three large bedrooms, one of which can serve as a 5th bedroom or as an open loft.

Convenience is a hallmark of The Essex. With room for two full-size cars and plenty of storage space, the garage also offers easy access to the interior of the home. Adjacent is a laundry room featuring a full-size washer and dryer.



ESTANCIA

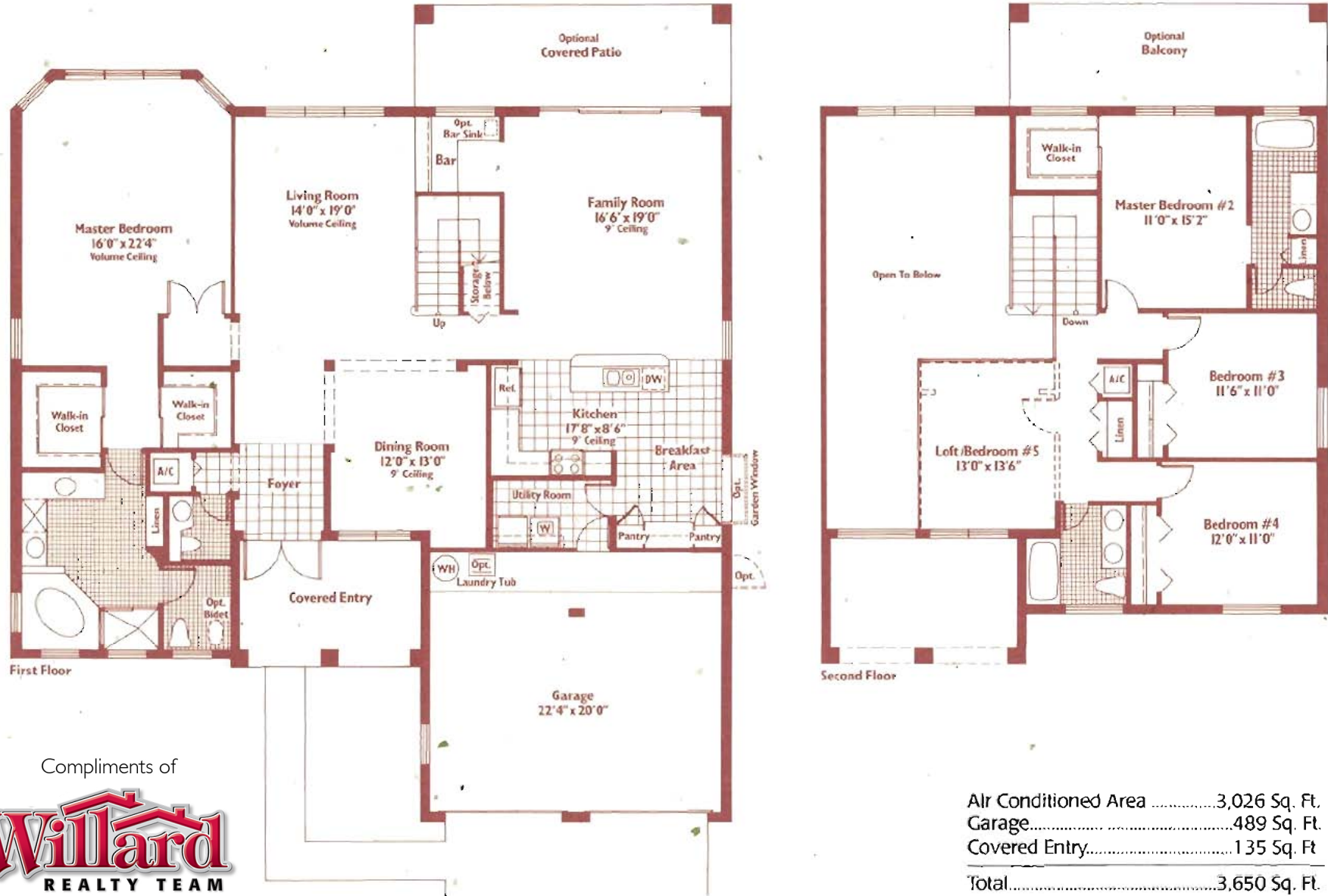
IN PEMBROKE PINES

18900 SW 3RD STREET • PEMBROKE PINES, FL 33029 • 305/433-5399

A Joint Venture of The Adler Companies and Levitt Homes, Incorporated

The Essex

5 Bedrooms, 3 1/2 Baths, Family Room, 2 Stories, Loft Conversion, and 2-Car Garage



Air Conditioned Area	3,026 Sq. Ft.
Garage.....	489 Sq. Ft.
Covered Entry.....	135 Sq. Ft.
Total.....	3,650 Sq. Ft.

Compliments of
Willard
 REALTY TEAM

954-745-4735
 Keller Williams Realty

Plans, specifications, dimensions, materials, elevations and availability subject to change without prior notice.
 Floor plans not to scale and may be reverse (mirror image) of those shown. Landscaping depicted not to scale and may vary as to maturity and number.