

The Chelsea

4 Bedrooms, 2 1/2 Baths, Family Room,
2 Stories, Loft Conversion, and 2-Car Garage



Virtually identical to The Carillon, there is only one difference in The Chelsea—it offers a loft, or the option of a fourth bedroom, on the second floor. Like The Carillon, The Chelsea has a magnificent sense of space. Natural light pours into the home from all directions through the elegant clerestory windows.

Whether it is a birthday party for 20 children or a neighborhood get-together, the family room is large enough to accommodate everyone. There is even a covered terrace for when the festivities move outdoors. Perfect for preparing a gourmet dinner or just enjoying a midnight snack, the kitchen has a bay window eating area that looks out toward the backyard. The

laundry room is conveniently located for the whole family.

Upstairs are the private family quarters. At one end of the broad hallway are two bedrooms that share a complete bath. The master suite is at the other end of the hallway through a striking double-door entry. A superb master bath, awash in marble appointments, includes a Roman tub, separate "His & Hers" vanities and a large corner shower, with double showerheads. The walk-in closet has enough space for even the most impressive wardrobe.

With elegant space for grand entertaining and private space for quiet relaxation, The Chelsea is a magnificent home.



ESTANCIA

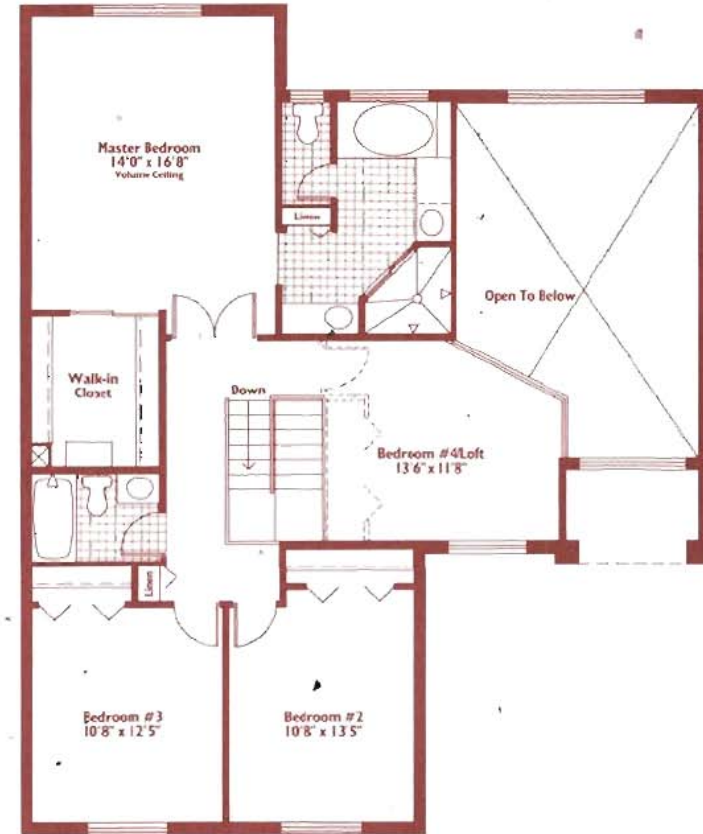
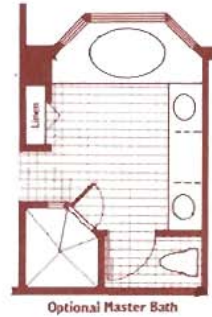
IN PEMBROKE PINES®

18900 SW 3RD STREET • PEMBROKE PINES, FL 33029 • 305/433-5399

A Joint Venture of The Adler Companies and Levitt Homes, Incorporated

The Chelsea

4 Bedrooms, 2 1/2 Baths, Family Room, 2 Stories, Loft Conversion, and 2-Car Garage



Compliments of



954-745-4735

Keller Williams Realty

Air Conditioned Area.....	2,138 Sq. Ft.
Garage.....	475 Sq. Ft.
Covered Entry.....	44 Sq. Ft.
Covered Terrace.....	75 Sq. Ft.
Total.....	2,732 Sq. Ft.

Plans, specifications:
Floor plans not to scale and may be revised.

100% prior notice.
Plans may vary as to maturity and number.